

Fan coils with brushless motor

BRIO-I

Cooling capacity: 1.9÷8.0 kW - Heating capacity: 2.5÷11.2 kW



• **Reduced consumption by 50% with respect to a traditional motor**

• **Continuous fan speed regulation**

• **More quiet operation**

• **Enhanced room comfort**

**Floor and ceiling fan coil units with cabinet.****Construction features: BRIO-I and BRIO-EV**

- Heat exchanger: with finned coil with left-hand connections reversible to right.
- **BRIO-I**: centrifugal fan with an inverter controlled brushless electronic motor and continuous speed adjustment.
- **BRIO-EV**: centrifugal fan with a 6-speed motor, 3 of which connected in the terminal board.
- Structure: cover panel in painted galvanized sheet metal complete with renewable filter and condensation drain pan with natural drainage; direction-adjustable grilles in heat-resistant ABS polymer.

BRIO-I Versions

- MUP - Horizontal/vertical unit with cabinet equipped with lower air inlet and upper outlet for wall mounting with feet on ground or ceiling installation.
- MUT - Horizontal/vertical unit with cabinet equipped with front air inlet and upper outlet for floor or ceiling installation.

BRIO-EV Versions

- MVP - Vertical unit with cabinet equipped with lower air inlet and upper outlet for wall mounting or with feet on ground.
- MVT - Vertical unit with cabinet equipped with front air inlet and upper outlet for floor installation.
- MOP - Horizontal/vertical unit with cabinet equipped with rear air inlet and front flow for ceiling installation, wall-mounting or with feet on ground.
- MOT - Horizontal/vertical unit with cabinet equipped with lower air inlet and front outlet for ceiling of floor installation.

Models

- BRIO-I: 5 models and 4 sizes.
- BRIO-EV: 10 models and 5 sizes.

Recessed control panel
•
Remote control
•
Wall-mounted control panel



- **Exclusive design**
- **Adjustable outlet grille**
- **6-speed fan**
- **Remote control**



ACCESSORIES: BRIO-I and BRIO-EV

- ❖Additional water heating coil.
- ❖Electric heater.
- ❖Valve and balancing valve.
- ❖ON/OFF 2-way valves for 2 and 4-pipe-systems.
- ❖ON/OFF 3-way valves for 2 and 4-pipe-systems.
- ❖Auxiliary condensation drain pan.
- Manual damper.
- Motorised damper.
- Rear panel.
- Rear closure panel.
- Rear closure panel with grille and filter.
- Support feet with pipe cover.

STANDARD CONTROLS: BRIO-EV

For wall installation

- Panel with speed and summer/winter switch.
- Panel with room thermostat, summer/winter switch, speed switch, ON/OFF valve signal and electric heater.
- Minimum temperature thermostat (for installation on the machine).

- Electronic panel with automatic summer/winter changeover for 2-pipe-systems.
- Electronic panel with automatic summer/winter changeover and automatic speed regulation for 2-pipe-systems with electric heater or 4-pipe-systems.

For installation on machine (MVP and MVT versions)

- ❖Panel with speed switch.
- ❖Panel with room thermostat, summer/winter switch and speed switch.
- ❖Minimum temperature thermostat.
- ❖Panel with room thermostat, summer/winter switch, speed switch, ON/OFF valve signal and electric heater.
- ❖Electronic panel with automatic summer/winter changeover for 2-pipe-systems.
- ❖Electronic panel with automatic summer/winter changeover and automatic speed regulation for 2-pipe-systems with electric heater or 4-pipe-systems.
- Interface card for controlling up to 4 fan coil units.

CONTROLS : BRIO-I and BRIO-EV

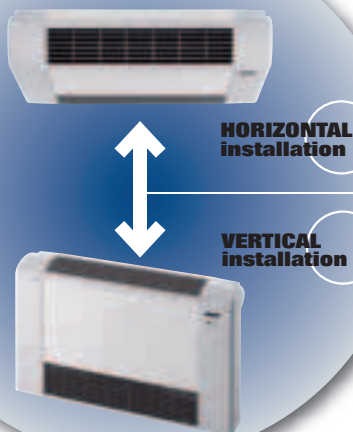
- On board remote control and receiver.
- Electronic panel for wall or on board mounting.
- Wall-mounted electronic panel

For installation on machine.

- ❖Master/slave circuit board.
- ❖Temperature probe for hot row.
- ❖Module for management of ON/OFF valves and electric heater.
- Serial interfaces for connection to BMS (proprietary protocol, Modbus RTU).
- Serial converters (RS485/RS232, RS485/USB) in the case of centralised unit management.
- Serial interface (CAN-bus - Controller Area Network) for the iDRHOSS system.

Key: ❖ Factory fitted → Supplied loose

BRIO-I MUP-MUT VERSIONS
for vertical/horizontal installation



Fan coils

BRIO-I / BRIO-EV

- *Wide range of colours*
- *Adjustable outlet grille*
- *High acoustic comfort*



VERSIONS:

STANDARD



BI-COLOUR



MONO-COLOUR



RAL COLOURS (*)

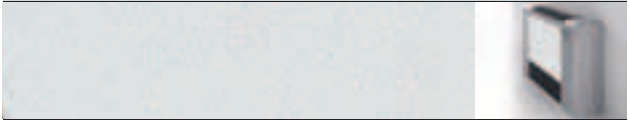
Customised colour selection
It is possible to choose the desired colour from the RAL range, e.g.

RAL 2000



RANGE OF COLOURS:

RHOSS special colours (*)



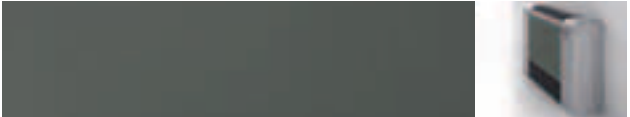
PEARL WHITE



METALLIC SILVER GREY



METALLIC NIGHT BLUE



SATIN-FINISH BRONZE



GRAPHITE BLACK



METALLIC PURPLE

(*)The RHOSS special colours and the RAL colours are available with BI-COLOUR and MONO-COLOUR set-up.





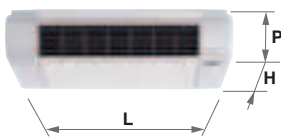
NEW BRIO-I

BRIO-I MUP-MUT MODEL			20	30	40	60	80
❶ Total cooling capacity	MAX	kW	1,88	2,86	3,95	6,37	8,01
	SMIN	kW	0,75	1,09	1,54	1,79	2,11
❷ Heating capacity (50°C)	MAX	kW	2,47	3,69	5,03	8,37	11,21
	SMIN	kW	0,91	1,42	1,81	2,24	3,07
❸ Heating capacity additional coil	MAX	kW	2,19	3,14	3,79	6,29	7,52
	SMIN	kW	1,00	1,47	1,78	2,49	2,89
Air flow speed	MAX	m³/h	331	523	645	1.235	1.503
	SMIN	m³/h	97	167	198	256	300
Sound power level	MAX	dB(A)	48	50	51	62	66
	SMIN	dB(A)	23	24	25	27	32
❹ Sound pressure level	MAX	dB(A)	40	42	43	54	58
	SMIN	dB(A)	15	16	17	19	24
Absorbed power	MAX	W	23,4	28,0	39,0	98,0	136,0
	SMIN	W	5,8	6,0	7,0	7,0	9,0
Electrical supply	V-ph-Hz		230-1-50	230-1-50	230-1-50	230-1-50	230-1-50
BRIO-I MUP-MUT DIMENSIONS AND WEIGHTS			20	30	40	60	80
LxHxP - WidthxHeightxDepth	mm		800x570x220	1000x570x220	1200x570x220	1500x570x220	1500x570x220
Weight	kg		20	21	28	35	37

BRIO-EV

BRIO-EV MVP-MVT-MOP-MOT MODEL			15	20	22	25	30	35	40	50	60	NEW 75
❶ Total cooling capacity	kW	(Speed)	0,94 (III)	1,49 (III)	1,92 (I)	2,16 (II)	2,71 (II)	3,26 (II)	3,91 (II)	4,71 (II)	5,92 (II)	7,61 (II)
	kW	(Speed)	0,74 (V)	1,14 (V)	1,49 (III)	1,95 (III)	2,37 (IV)	2,74 (III)	3,12 (III)	3,78 (IV)	5,11 (IV)	6,57 (IV)
	kW	(Speed)	0,62 (VI)	1,09 (VI)	1,14 (V)	1,56 (V)	1,71 (VI)	1,99 (VI)	2,70 (V)	3,23 (V)	4,28 (V)	6,06 (VI)
❷ Heating capacity (50°C)	kW	(Speed)	1,30 (III)	1,82 (III)	2,52 (I)	2,99 (II)	3,67 (II)	4,24 (II)	4,79 (II)	6,08 (II)	7,83 (II)	10,54 (II)
	kW	(Speed)	1,02 (V)	1,42 (V)	2,00 (III)	2,58 (III)	2,99 (IV)	3,61 (III)	3,91 (III)	4,64 (IV)	6,70 (IV)	9,52 (IV)
	kW	(Speed)	0,80 (VI)	1,26 (VI)	1,56 (V)	2,08 (V)	2,26 (VI)	2,79 (VI)	3,19 (V)	4,02 (V)	5,87 (V)	8,61 (VI)
❸ Heating capacity (70°C)	kW	(Speed)	2,21 (III)	3,39 (III)	4,30 (I)	5,12 (II)	6,27 (II)	7,22 (II)	8,07 (II)	10,37 (II)	13,33 (II)	18,14 (II)
❹ Heating capacity additional coil	kW	(Speed)	1,34 (III)	1,96 (III)	2,05 (I)	2,78 (II)	2,99 (II)	3,40 (II)	4,03 (II)	5,46 (II)	5,87 (II)	7,17 (II)
	kW	(Speed)	1,15 (V)	1,64 (V)	1,81 (III)	2,37 (III)	2,55 (IV)	3,03 (III)	3,40 (III)	4,53 (IV)	5,67 (IV)	6,82 (IV)
	kW	(Speed)	0,98 (VI)	1,47 (VI)	1,51 (V)	1,96 (V)	2,06 (VI)	2,57 (VI)	3,00 (V)	4,02 (V)	5,56 (V)	6,20 (VI)
Air flow speed	m³/h	(Speed)	183 (III)	237 (III)	339 (I)	404 (II)	483 (II)	587 (II)	627 (II)	915 (II)	1.109 (II)	1.388 (II)
	m³/h	(Speed)	138 (V)	177 (V)	238 (III)	338 (III)	383 (IV)	471 (III)	473 (III)	662 (IV)	881 (IV)	1.171 (IV)
	m³/h	(Speed)	100 (VI)	154 (VI)	177 (V)	252 (V)	281 (VI)	364 (VI)	392 (V)	536 (V)	757 (V)	993 (VI)
Sound power level	dB(A)	(Speed)	40 (III)	41 (III)	48 (I)	42 (II)	47 (II)	48 (II)	50 (II)	56 (II)	60 (II)	65 (II)
	dB(A)	(Speed)	33 (V)	34 (V)	40 (III)	37 (III)	42 (IV)	43 (III)	45 (III)	47 (IV)	54 (IV)	60 (IV)
	dB(A)	(Speed)	30 (VI)	31 (VI)	32 (V)	31 (V)	34 (VI)	35 (VI)	39 (V)	41 (V)	50 (V)	57 (VI)
❺ Sound pressure level	dB(A)	(Speed)	32 (III)	33 (III)	40 (I)	34 (II)	39 (II)	40 (II)	42 (II)	48 (II)	52 (II)	57 (II)
	dB(A)	(Speed)	25 (V)	26 (V)	32 (III)	29 (III)	34 (IV)	35 (III)	37 (III)	39 (IV)	46 (IV)	52 (IV)
	dB(A)	(Speed)	22 (VI)	23 (VI)	24 (V)	23 (V)	26 (VI)	27 (VI)	31 (V)	33 (V)	42 (V)	49 (VI)
Maximum absorbed power	W		26	23	38	39	54	58	61	95	139	173
Electrical supply	V-ph-Hz		230-1-50	230-1-50	230-1-50	230-1-50	230-1-50	230-1-50	230-1-50	230-1-50	230-1-50	230-1-50
BRIO-EV MVP-MVT-MOP-MOT DIMENSIONS AND WEIGHTS			15	20	22	25	30	35	40	50	60	75
LxHxP - WidthxHeightxDepth	mm		700x 583x 220	800x 583x 220	800x 583x 220	1000x 583x 220	1000x 583x 220	1200x 583x 220	1200x 583x 220	1500x 583x 220	1500x 583x 220	1500x 583x 220
Height of feet	mm		100	100	100	100	100	100	100	100	100	100
Weight	kg		16	20	20	20	22	27	28	35	35	36

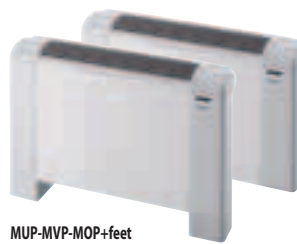
MUP-MOP for horizontal installation



MUT-MOT for horizontal installation

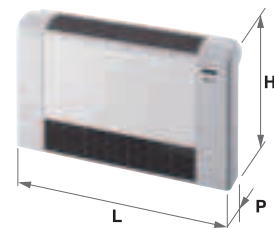


MUP-MVP-MOP for vertical installation



MUP-MVP-MOP+feet

MUT-MVT-MOT for vertical installation

**BRIO-I and BRIO-EV. In the following conditions:**

- ❶ Air: 27°C D.B.; 19°C W.B. - Water: 7/12°C; for BRIO-EV data referred to the speed indicated of the 6 available.
- ❷ Air: 20°C - Water: 50°C; flow rate as in cooling; for BRIO-EV data referred to the speed indicated of the 6 available.
- ❸ Air: 20°C - Water: 70/60°C; for BRIO-EV data referred to the speed indicated of the 6 available.
- ❹ At 1 m from air outlet with directionality factor of 2; for BRIO-EV data relative to the speed indicated of the 6 available.

SMIN - Super minimum speed.

WATER CHILLERS
HEAT PUMPS
AIR cooled
AXIAL fansWATER CHILLERS
HEAT PUMPS
AIR cooled
CENTRIFUGAL fansWATER CHILLERS
HEAT PUMPS
WATER cooled
CONDENSERLESS UNITSINDUSTRIAL &
PROCESS COOLINGEXP
Polyvalent systems

CONDENSING UNITS

SYSTEM ACCESSORIES

FAN COIL UNITS

TERMINAL UNITS